

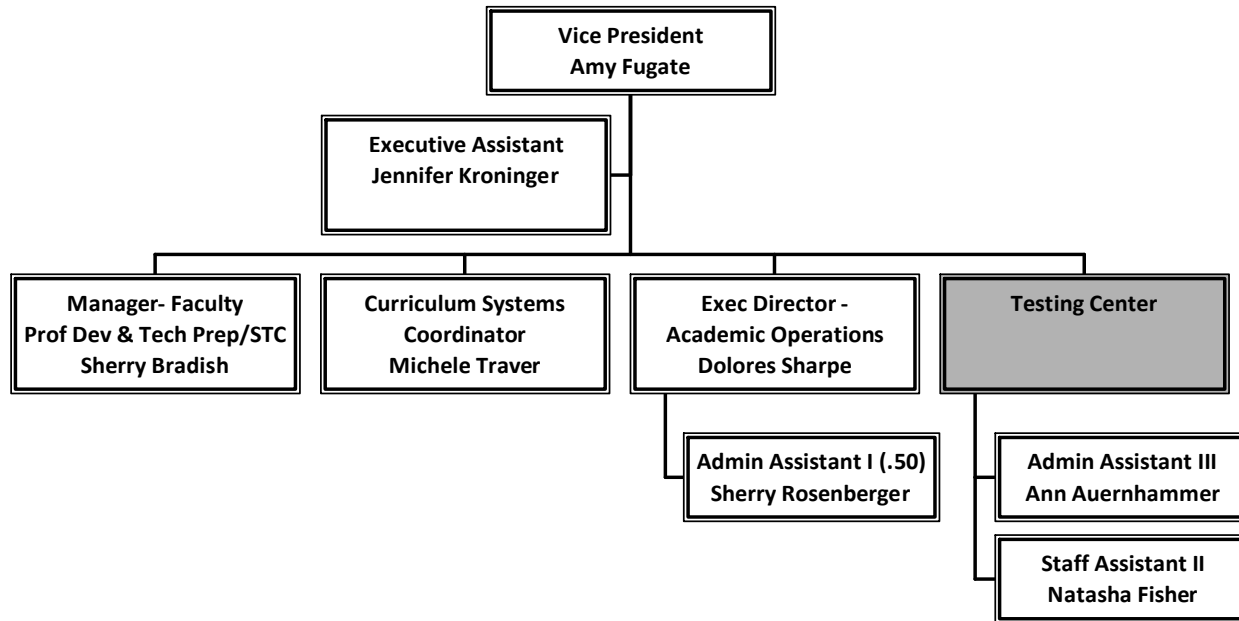
Mott Community College Organizational Charts

Academic Affairs (Office of the Vice President).....	3
Academic Affairs (Overview)	4
Accounting & Budget	5
Admissions	6
Athletics	7
Auxiliary Services	8
Business.....	9
Career & Technical Education.....	10
Chief Financial Officer (Overview)	11
College Overview	12
Computing & Network Services.....	13
Continuing Education & Extension Sites.....	14
Corporate Services/SLBC.....	15
Custodial & Grounds	16
e-Learning & Web Services	17
Educational Media Services	18
Enrollment Management & Retention	19
Enterprise Architecture.....	20
Fine Arts & Social Sciences.....	21
Foundation & College/Community Advancement	22
Grant Development	23
Health Sciences	24
Human Resources	25
Humanities	26
Information Technology Services	27
Learning Center & DisAbility Services.....	28
Library Services	29
Maintenance	30
Marketing & Public Relations	31
Office of Physical Plant	32
Planning, Research & Quality Initiatives.....	33
Professional Development.....	34
Public Safety.....	35
Public Safety – Community Policing & Criminal Investigations (1 st Shift)	36
Public Safety – Community Policing (2 nd Shift).....	37

Public Safety – Patrol & Investigative Operations (2 nd Shift).....	38
Public Safety – Extension Sites & Special Events	39
Public Safety – Patrol & Investigative Operations (3 rd Shift)	40
Public Safety – Wagner	41
Public Safety – Health & Medical Services.....	42
Purchasing.....	43
Regional Technology Initiatives	44
Registrar & Registration.....	45
Science & Math	46
Student & Administrative Services (Office of the Vice President).....	47
Student & Administrative Services (Overview).....	48
Student Financial Services	49
Student Services.....	50
Student Services Communications	51
Technology.....	52
Upward Bound Programs.....	53
Workforce & Career Development.....	54

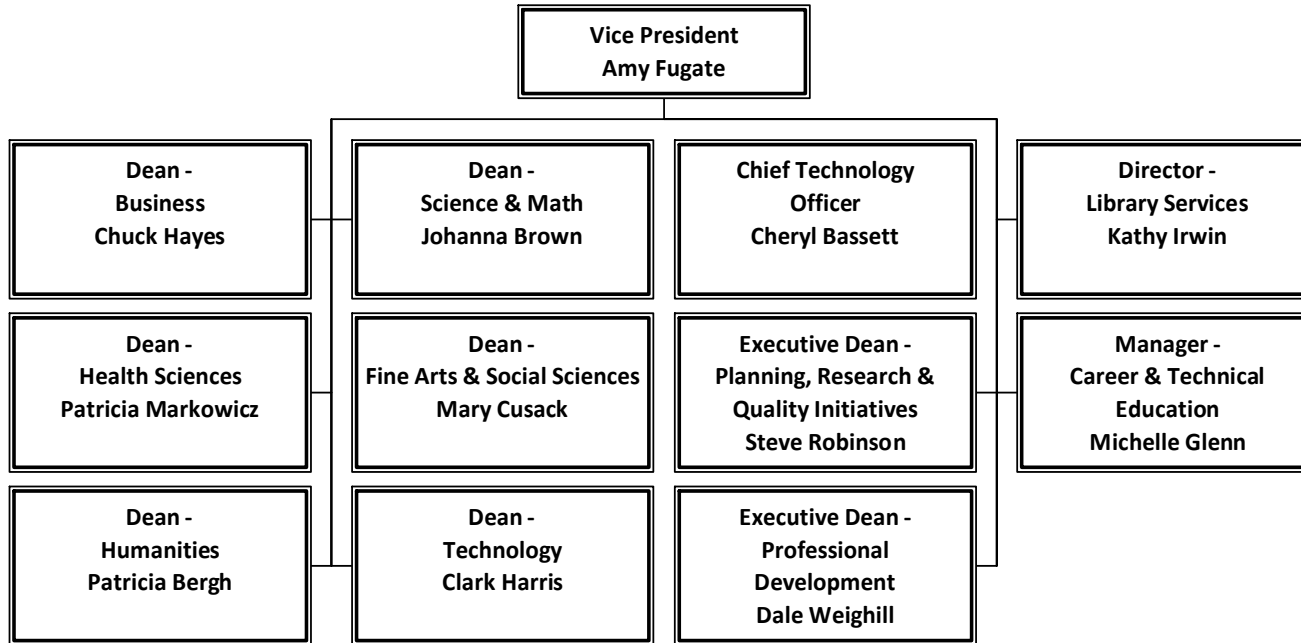
Academic Affairs (Office of the Vice President)

December 31, 2011



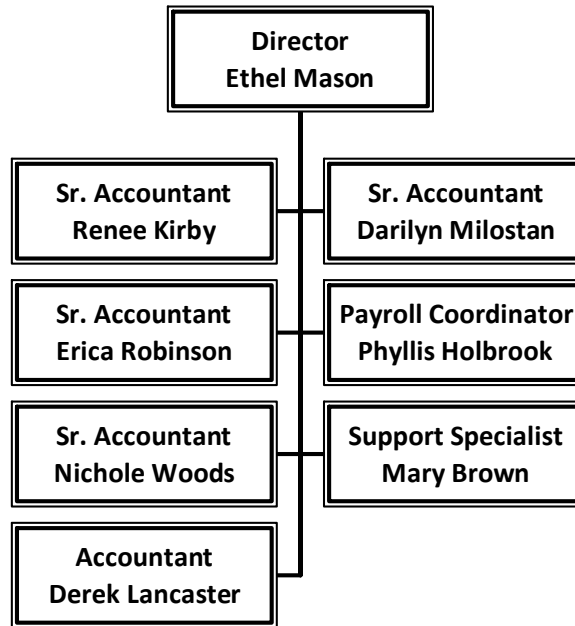
Academic Affairs (Overview)

December 31, 2011

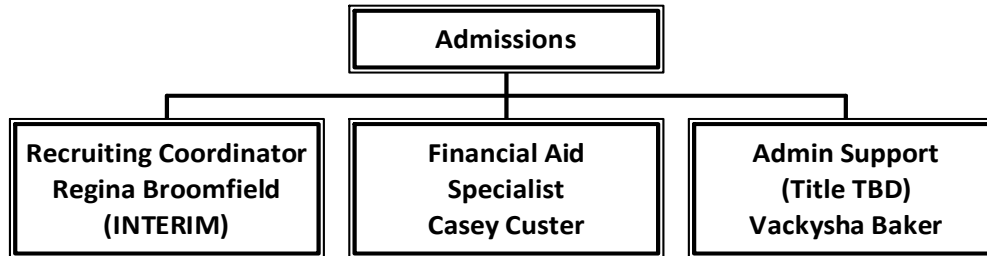


Accounting & Budget

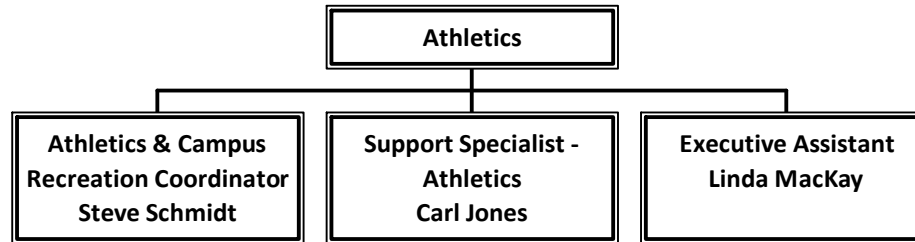
December 31, 2011



Admissions
December 31, 2011

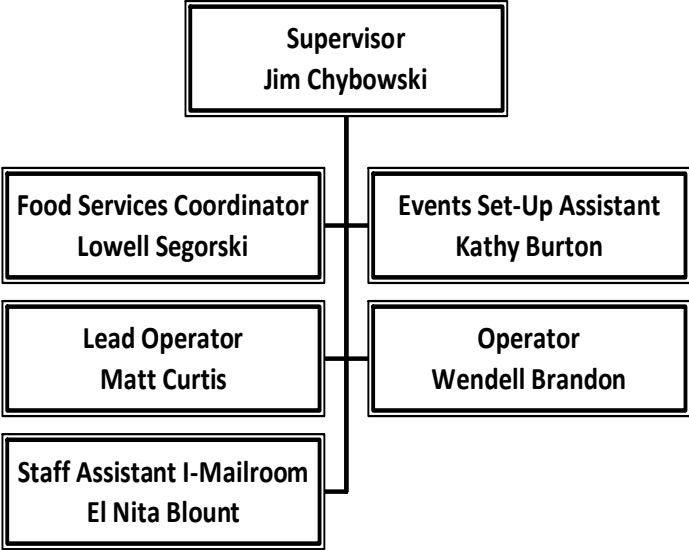


Athletics
December 31, 2011

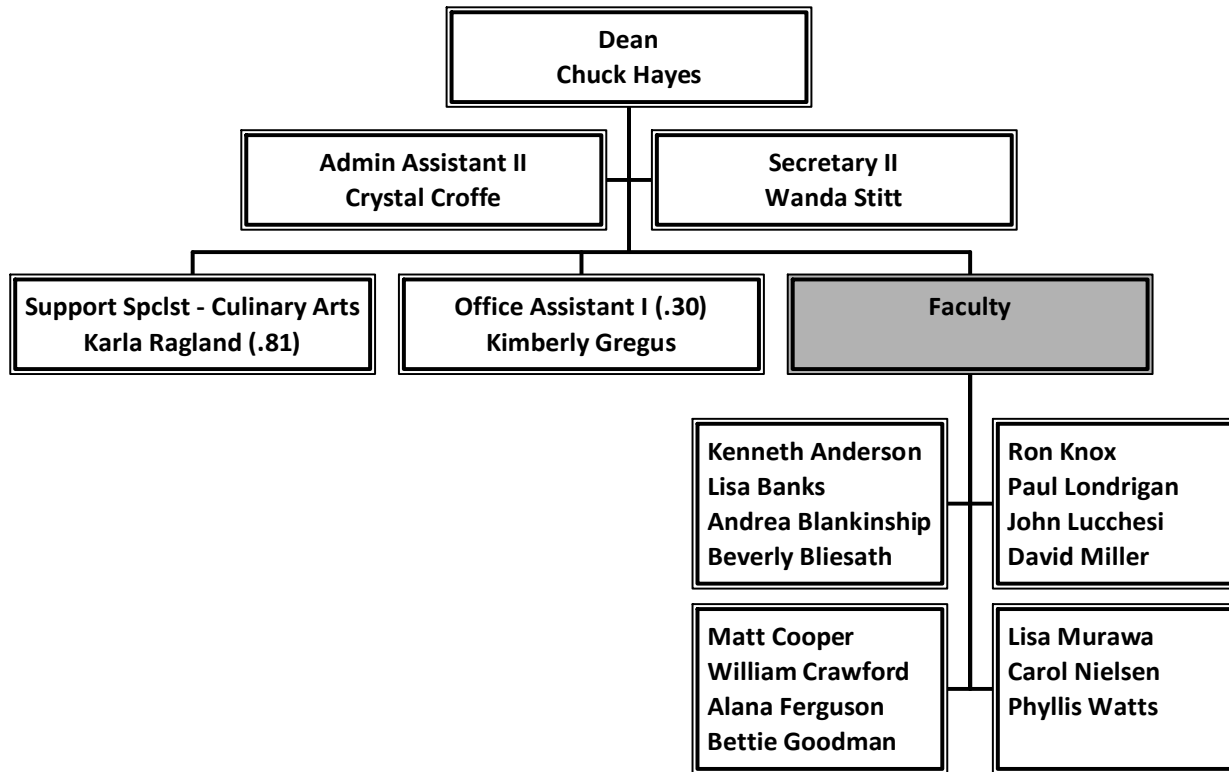


Auxiliary Services

December 31, 2011

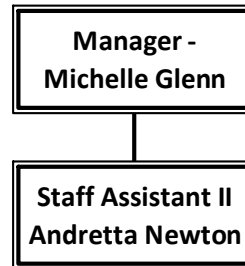


Business
December 31, 2011



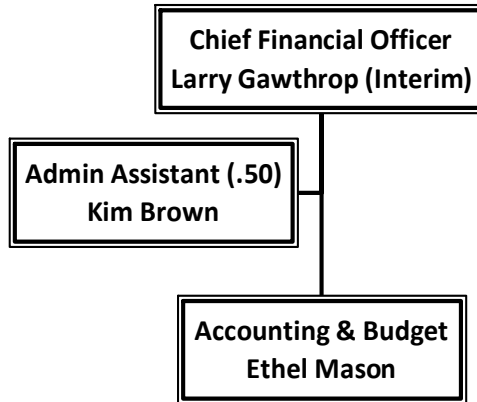
Career & Technical Education

December 31, 2011



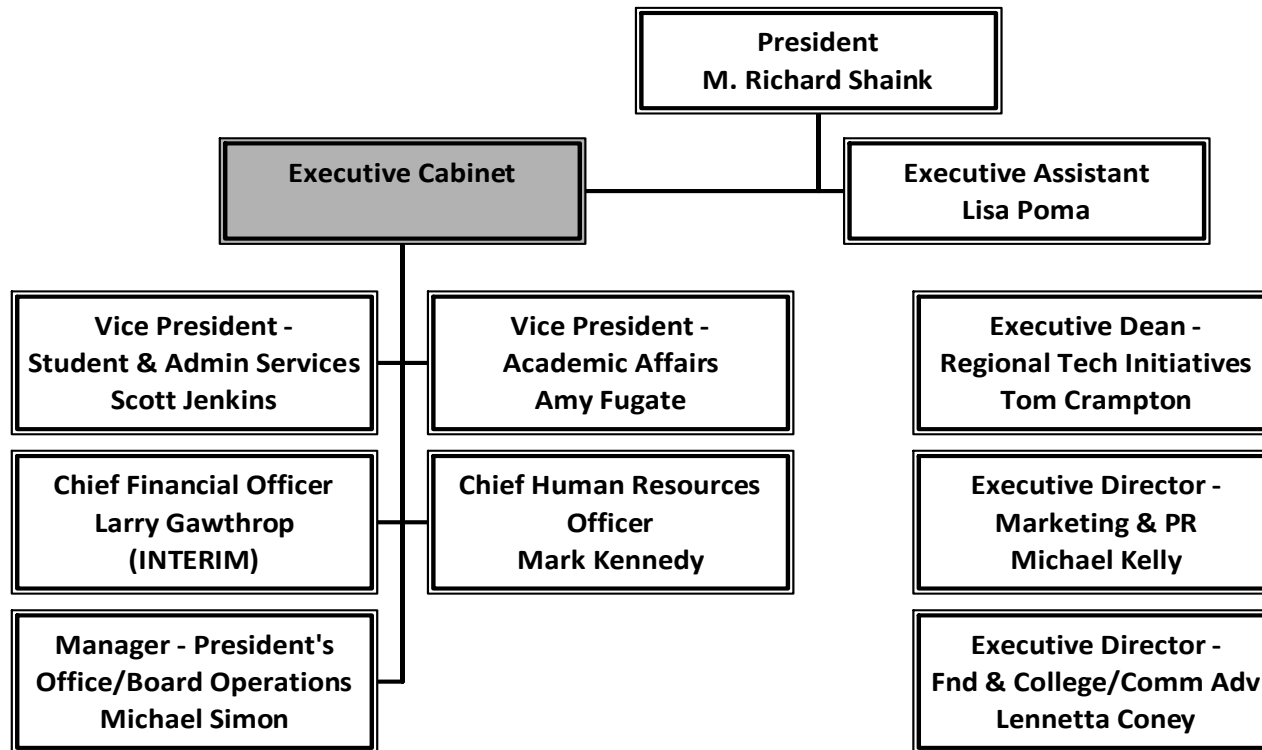
Chief Financial Officer (Overview)

December 31, 2011



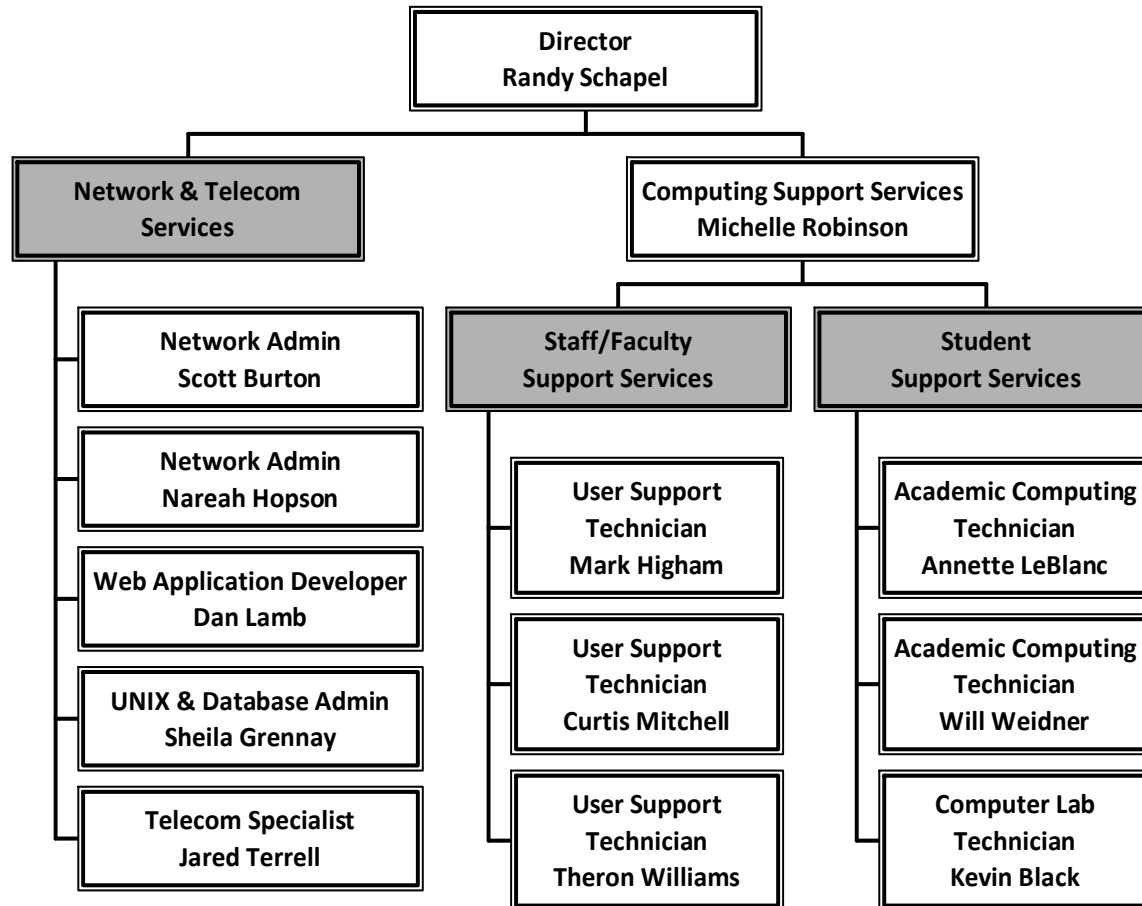
College Overview

December 31, 2011



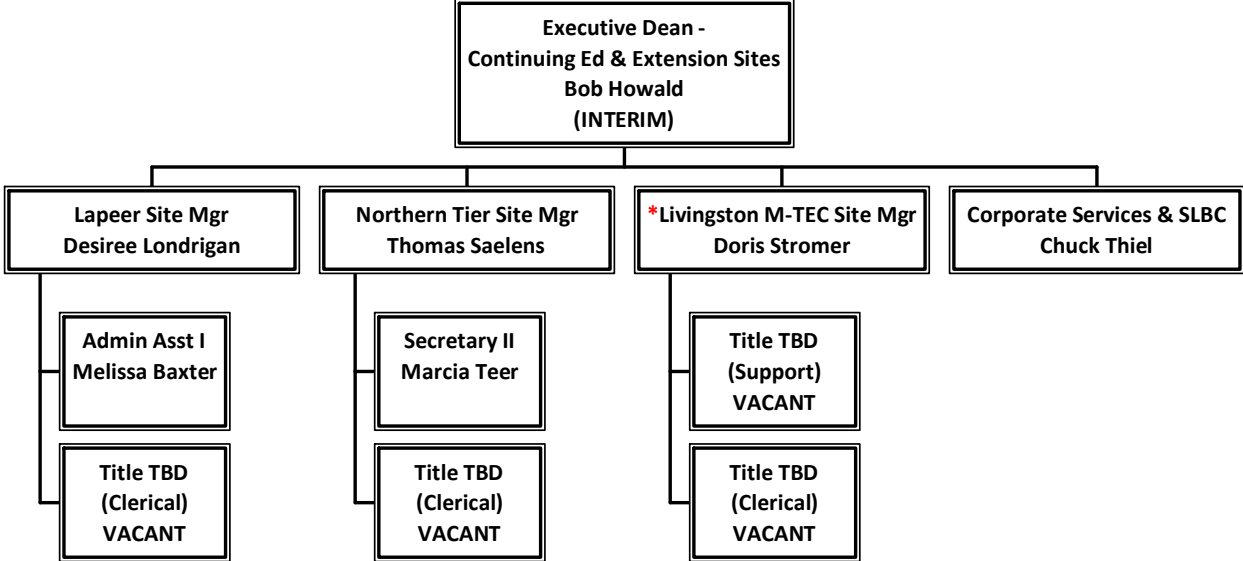
Computing & Network Services

December 31, 2011



Continuing Education & Extension Sites

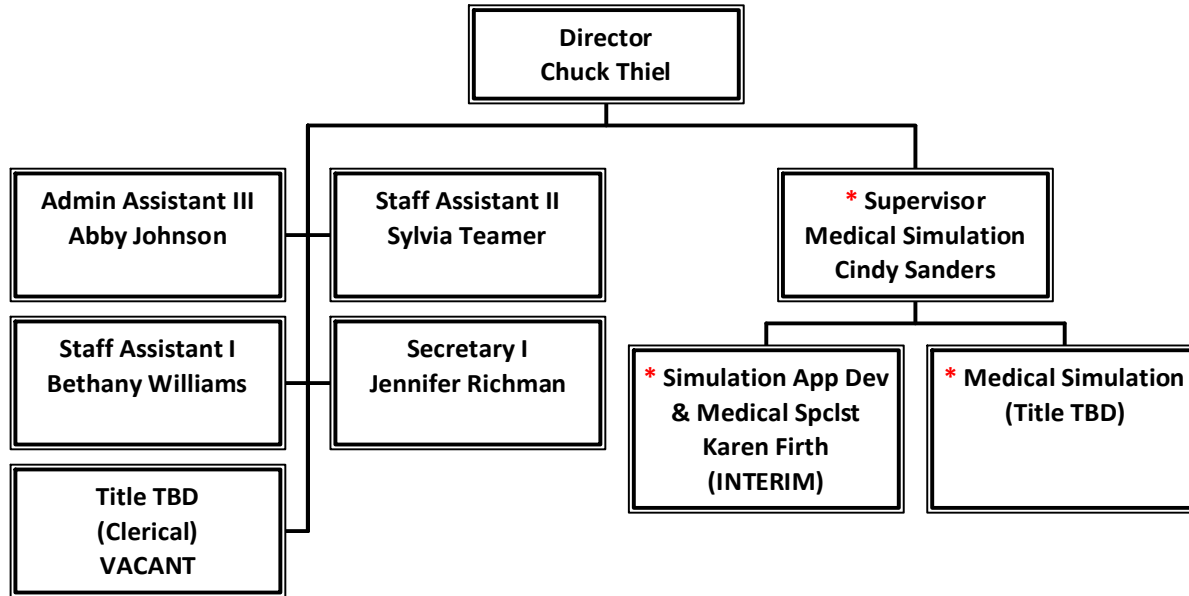
December 31, 2011



* Supplemental TAP

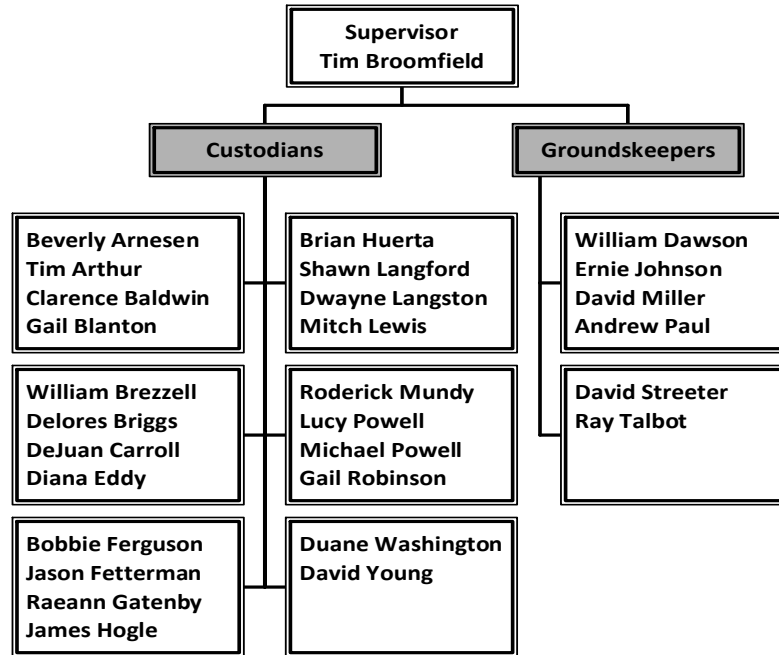
Corporate Services/SLBC

December 31, 2011



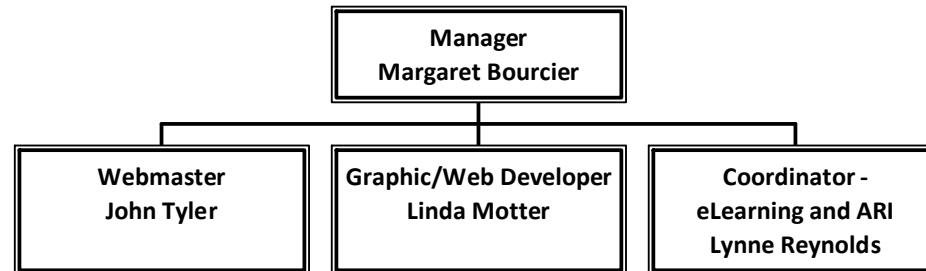
Custodial & Grounds

December 31, 2011



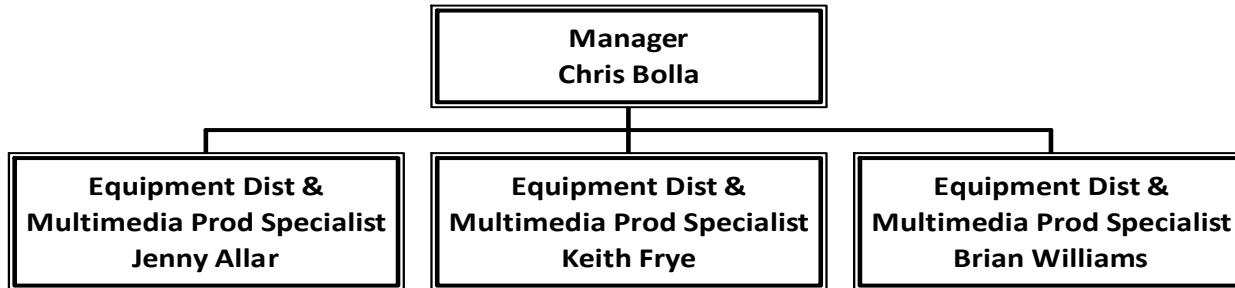
e-Learning & Web Services

December 31, 2011



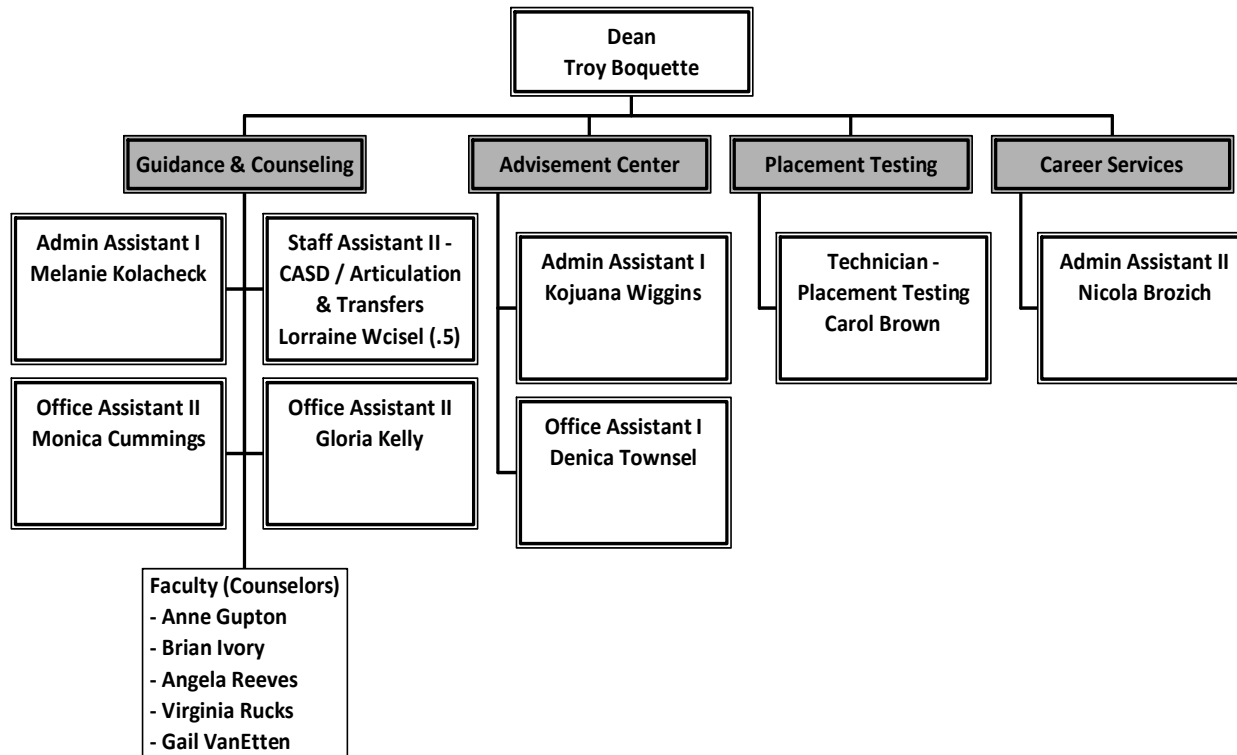
Educational Media Services

December 31, 2011



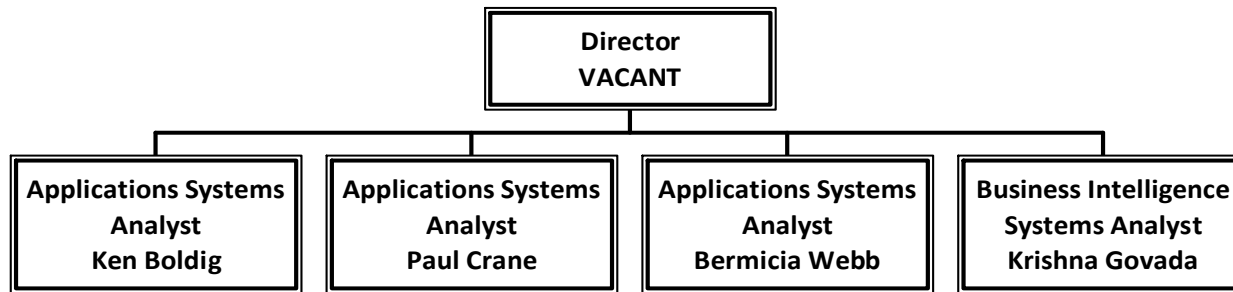
Enrollment Management & Retention

December 31, 2011



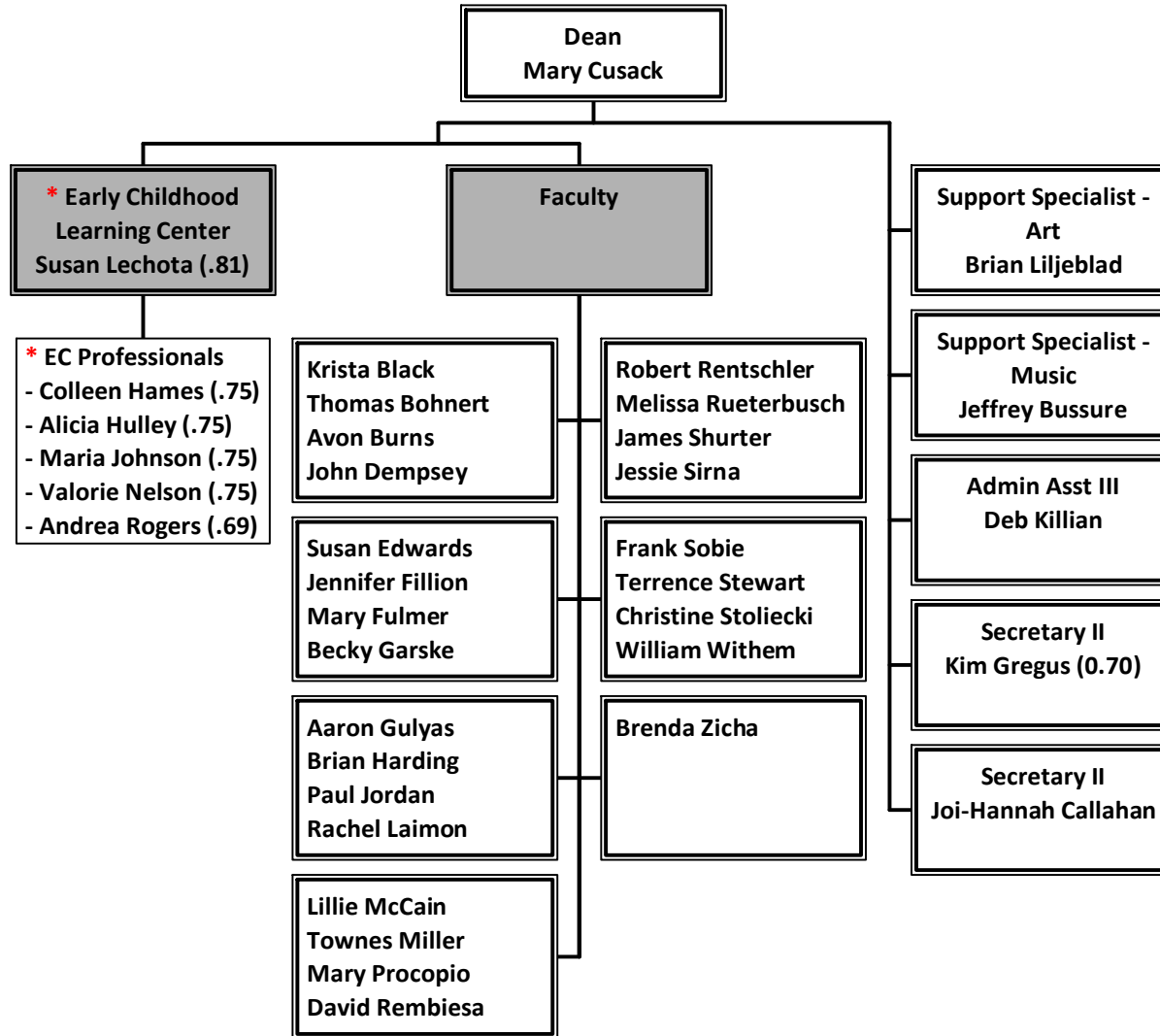
Enterprise Architecture

December 31, 2011



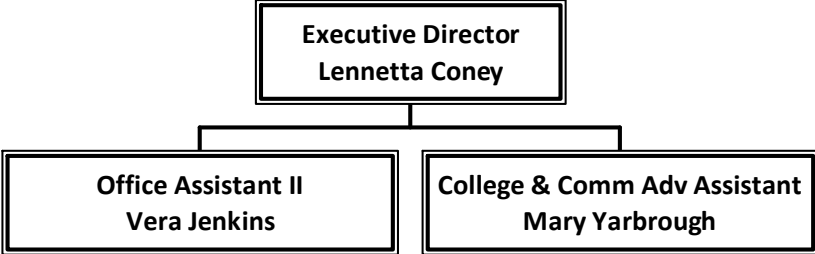
Fine Arts & Social Sciences

December 31, 2011



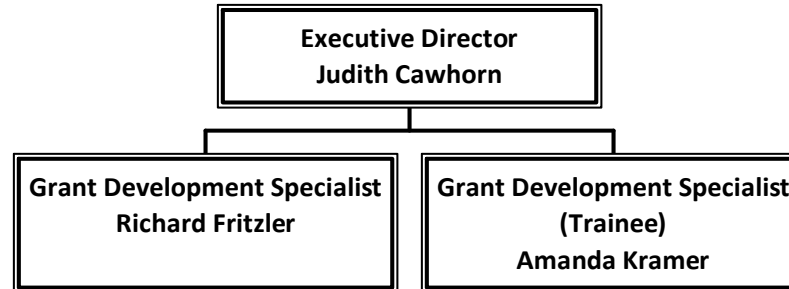
Foundation & College/Community Advancement

December 31, 2011



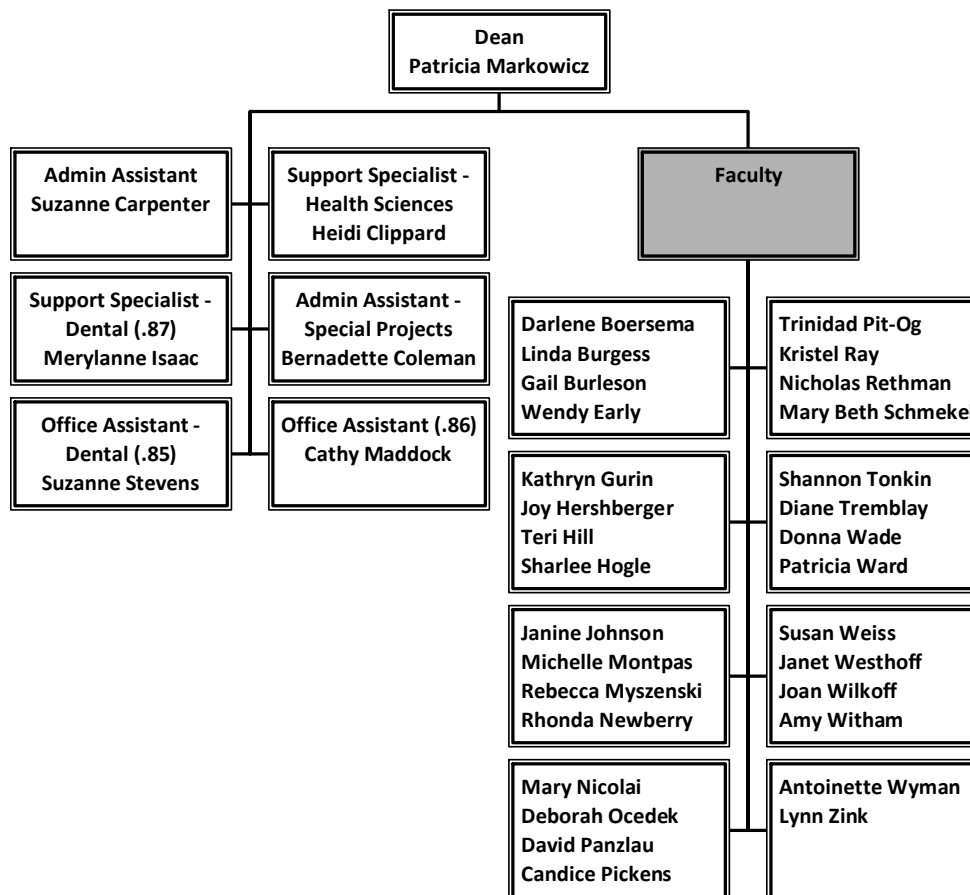
Grant Development

December 31, 2011



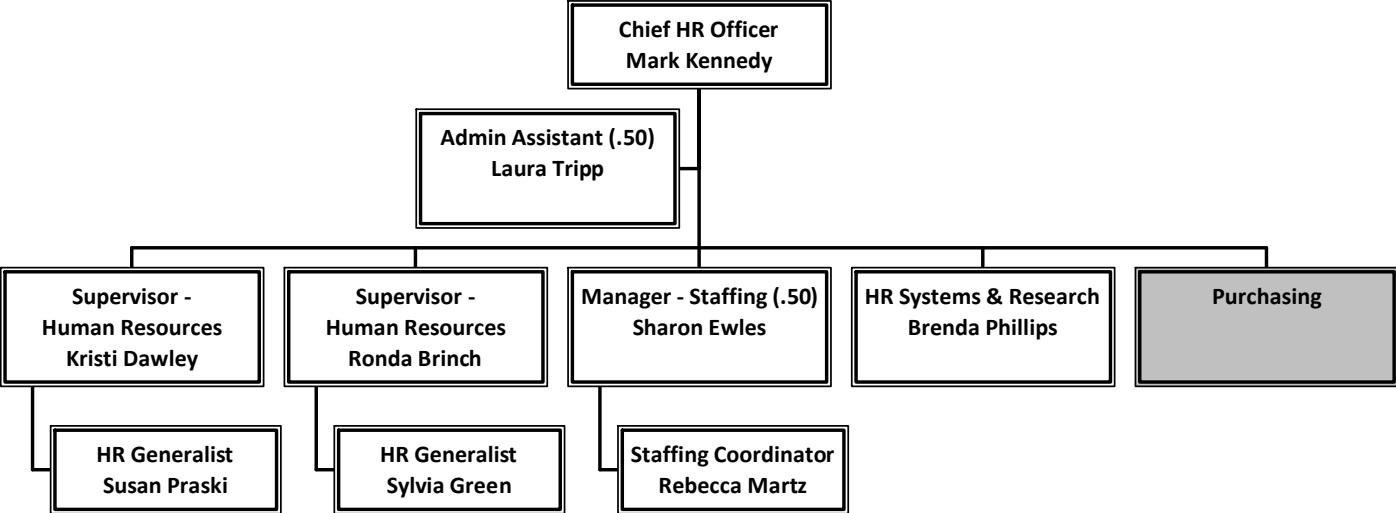
Health Sciences

December 31, 2011

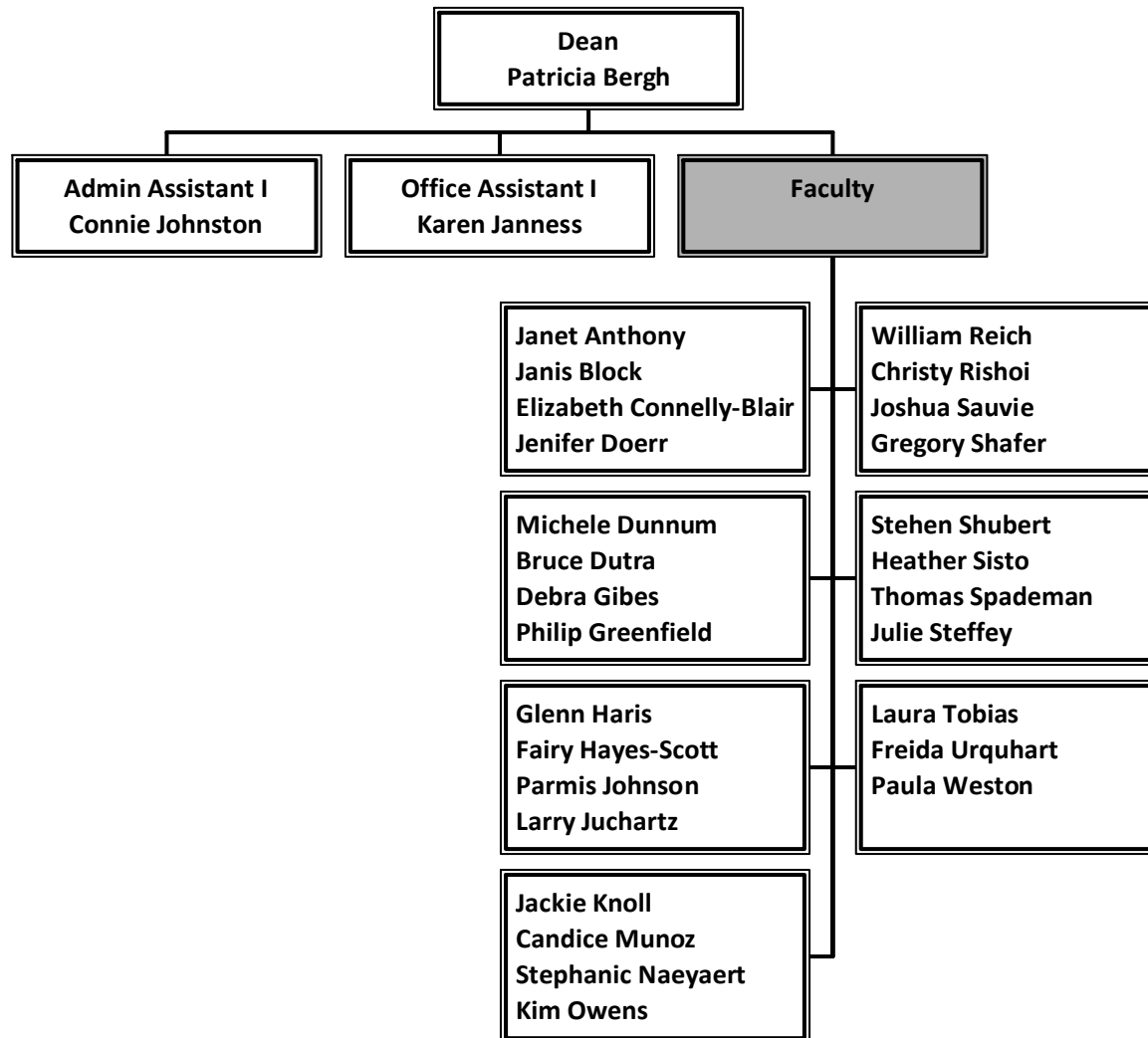


Human Resources

December 31, 2011

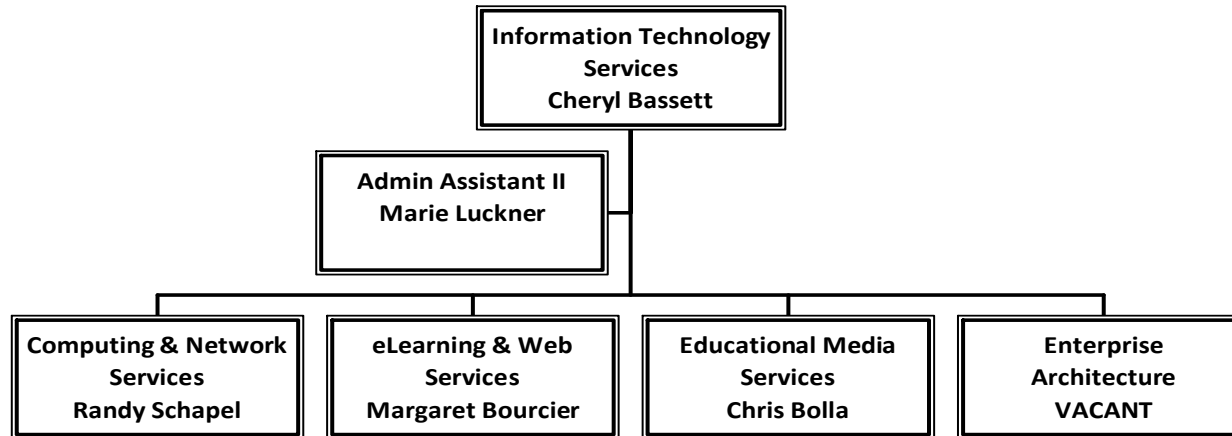


Humanities
December 31, 2011



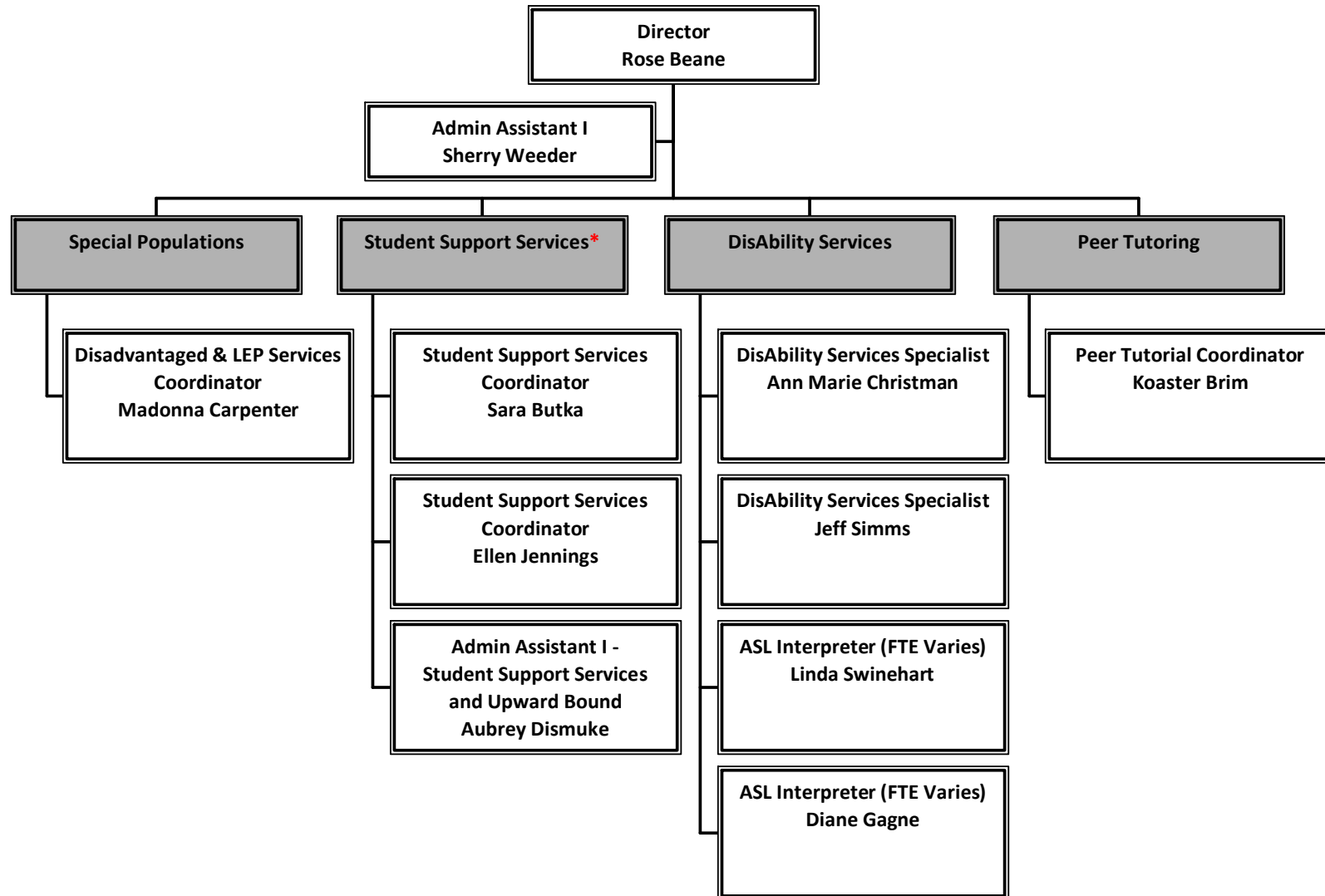
Information Technology Services

December 31, 2011



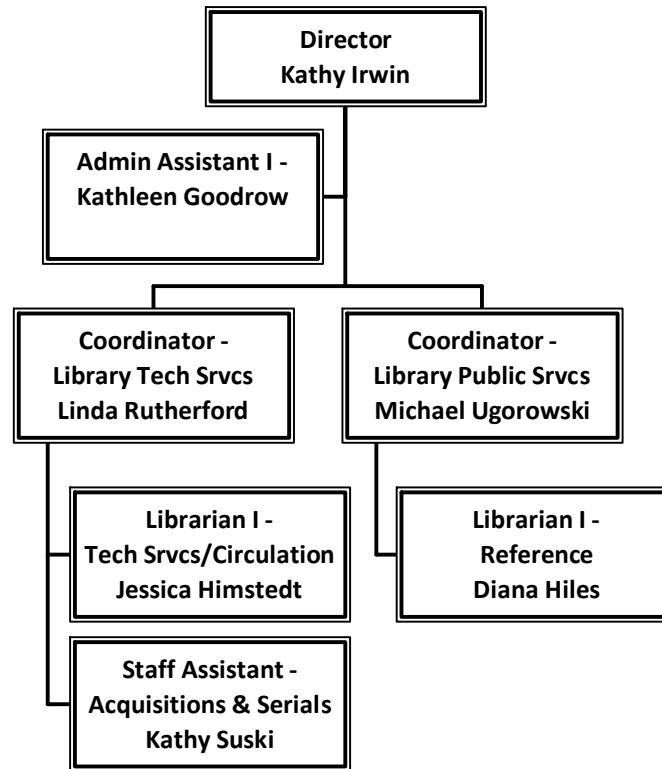
Learning Center & DisAbility Services

December 31, 2011

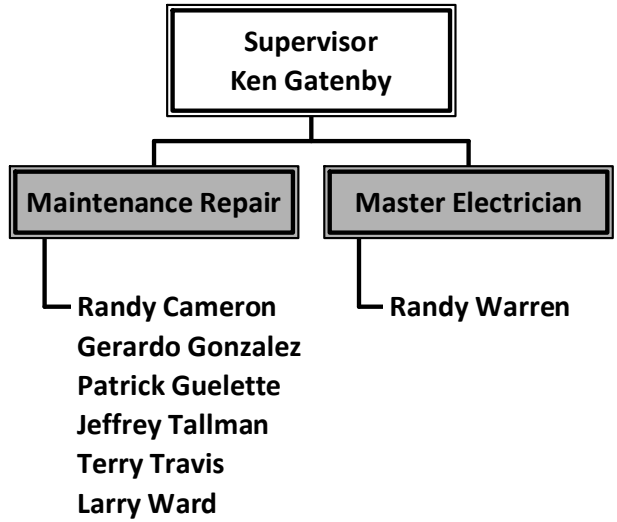


* Supplemental TAP

Library Services
December 31, 2011

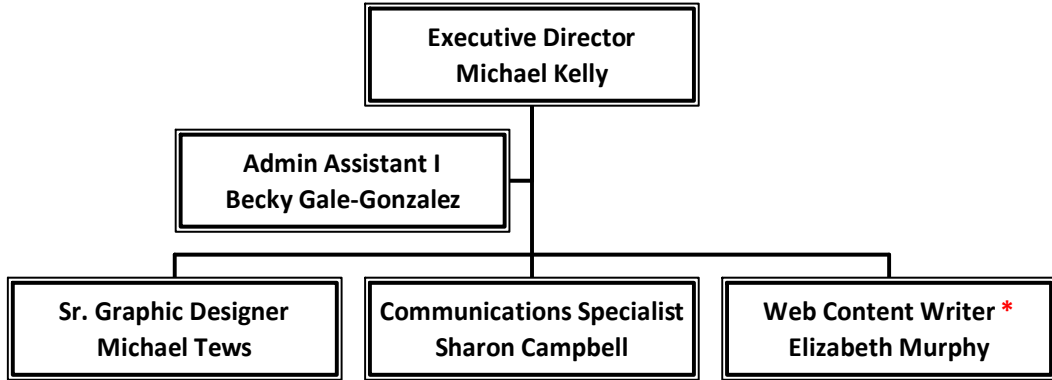


Maintenance
December 31, 2011



Marketing & Public Relations

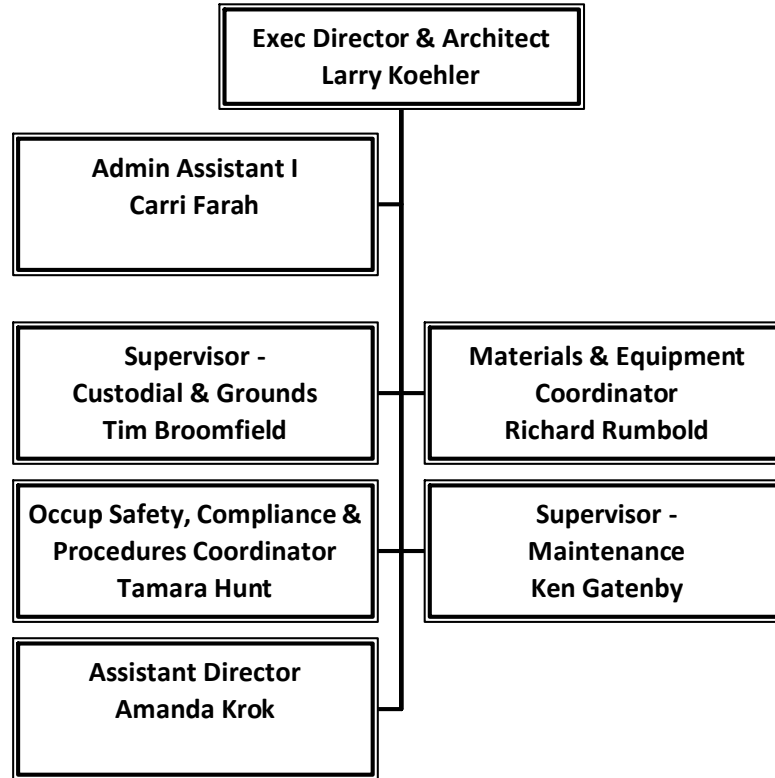
December 31, 2011



** Supplemental TAP*

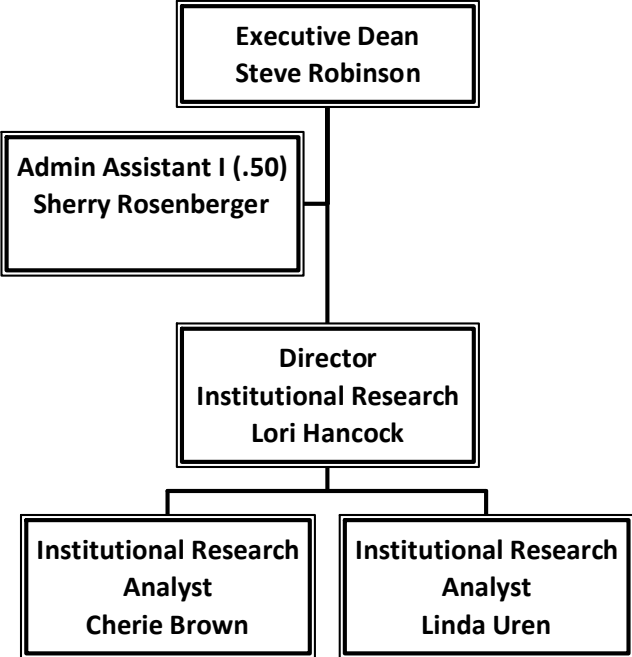
Office of Physical Plant

December 31, 2011



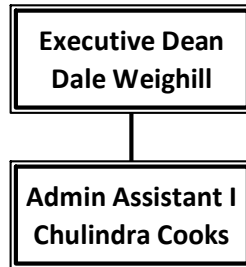
Planning, Research & Quality Initiatives

December 31, 2011



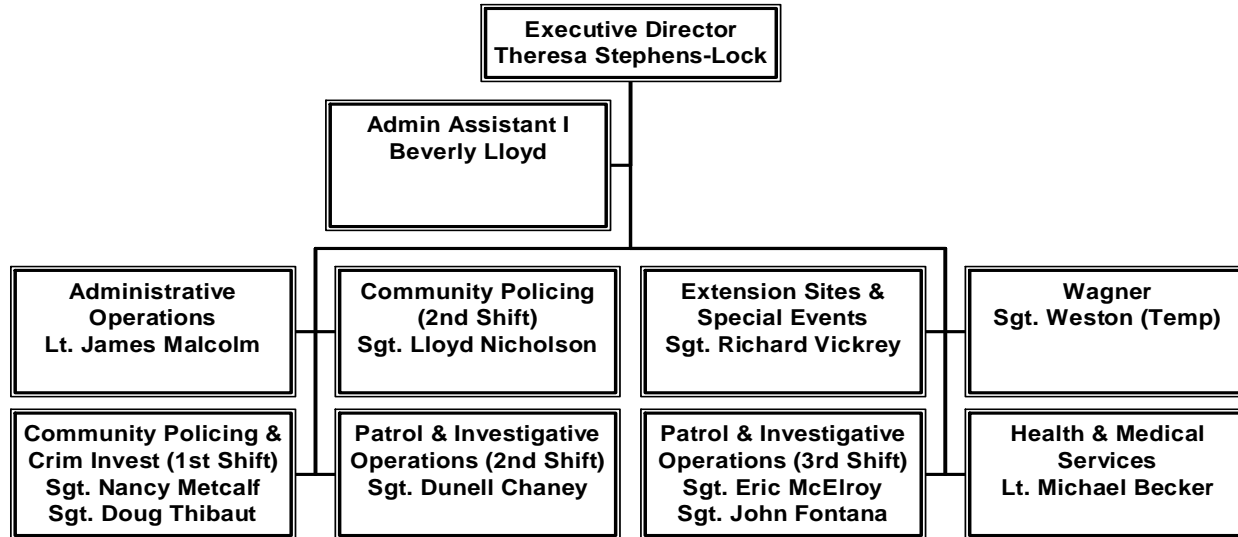
Professional Development

December 31, 2011



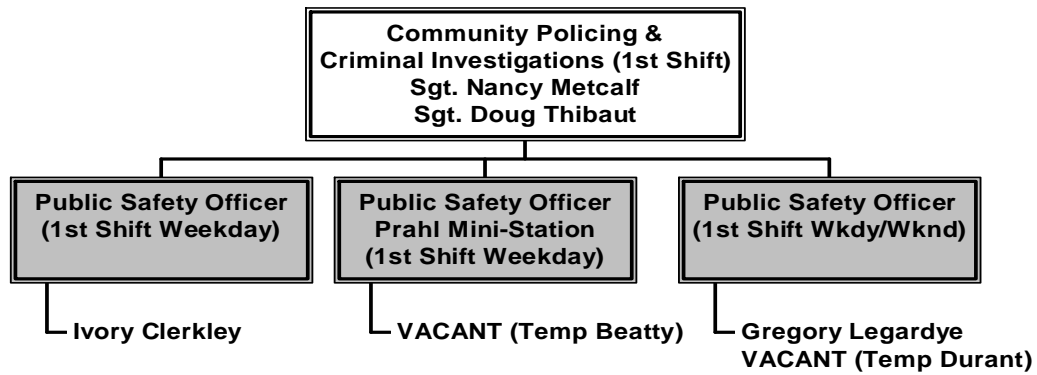
Public Safety

December 31, 2011



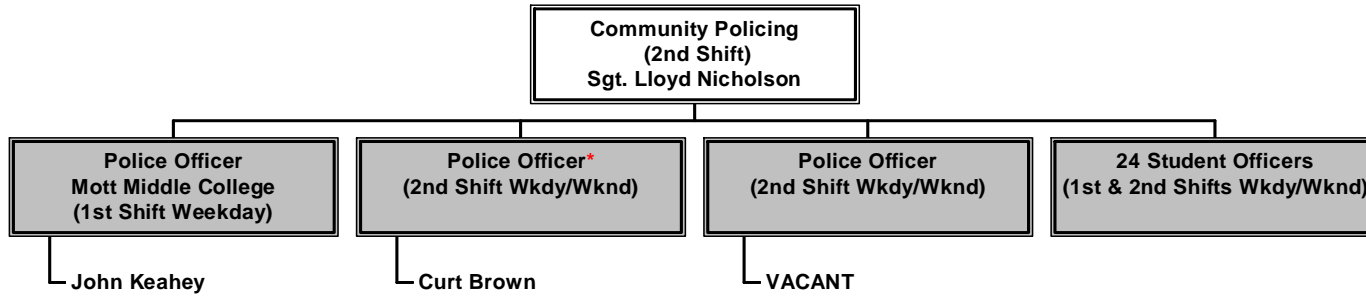
Public Safety – Community Policing & Criminal Investigations (1st Shift)

December 31, 2011



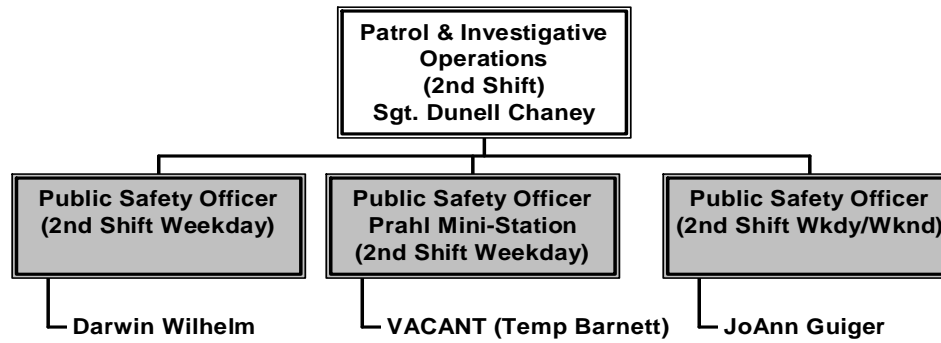
Public Safety – Community Policing (2nd Shift)

December 31, 2011



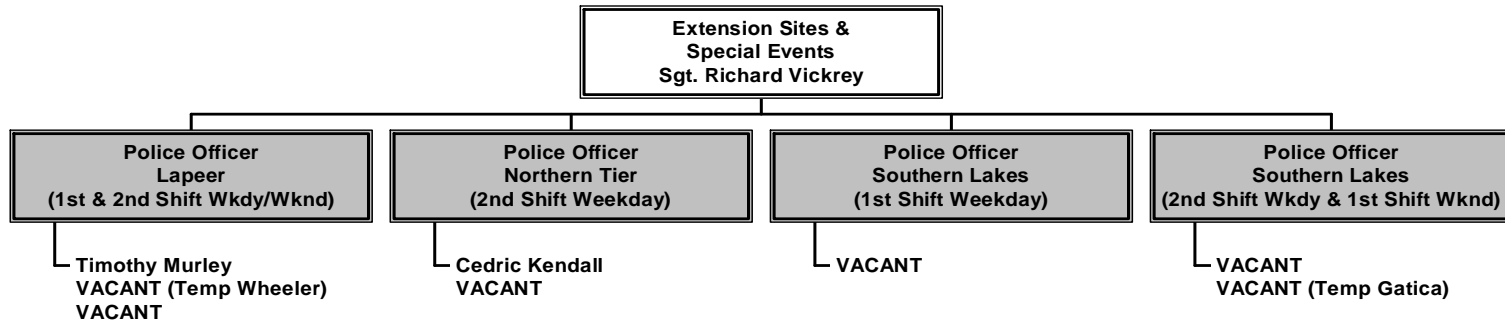
Public Safety – Patrol & Investigative Operations (2nd Shift)

December 31, 2011



Public Safety – Extension Sites & Special Events

December 31, 2011



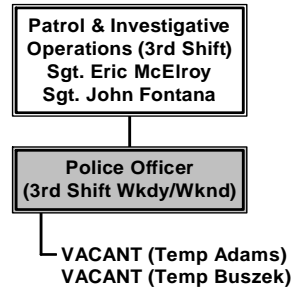
Public Safety – Patrol & Investigative Operations (3rd Shift)

December 31, 2011

Patrol & Investigative
Operations (3rd Shift)
Sgt. Eric McElroy
Sgt. John Fontana

Police Officer
(3rd Shift Wkdy/Wknd)

VACANT (Temp Adams)
VACANT (Temp Buszek)



Public Safety – Wagner

December 31, 2011

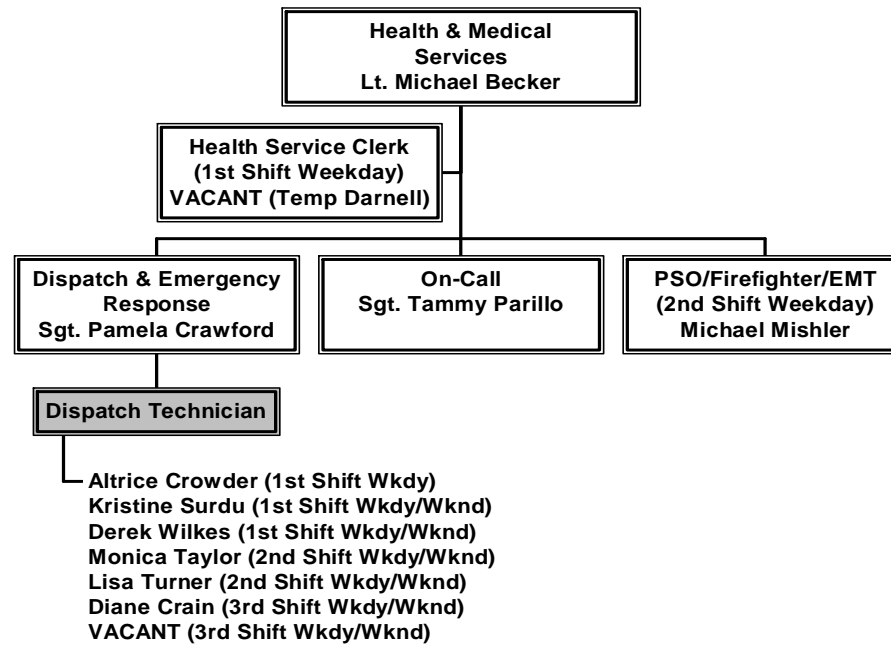
Wagner
(Split Shift Weekday)
VACANT (Temp Sgt. Weston)

Police Officer
(1st & 2nd Shift Weekday)

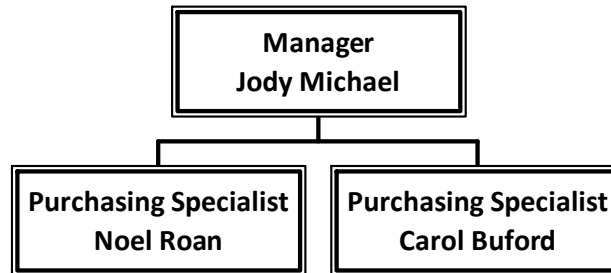
VACANT (Temp Fowlkes)
VACANT

Public Safety – Health & Medical Services

December 31, 2011

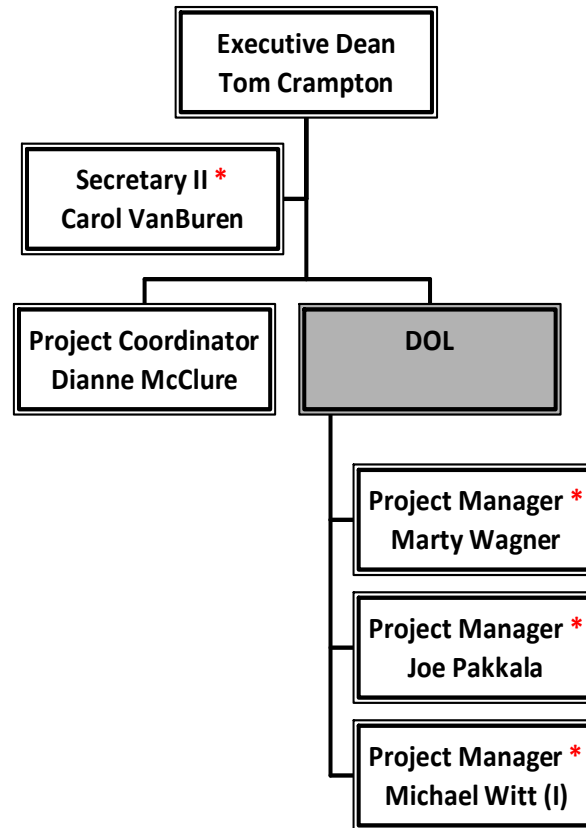


Purchasing
December 31, 2011



Regional Technology Initiatives

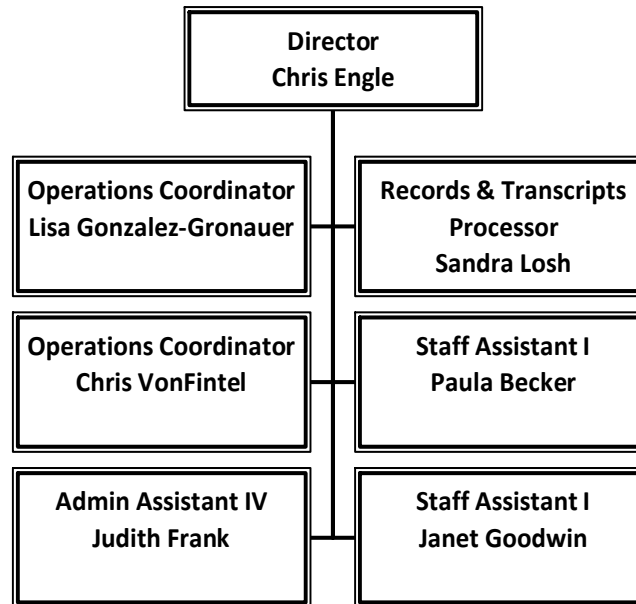
December 31, 2011



** Supplemental TAP*

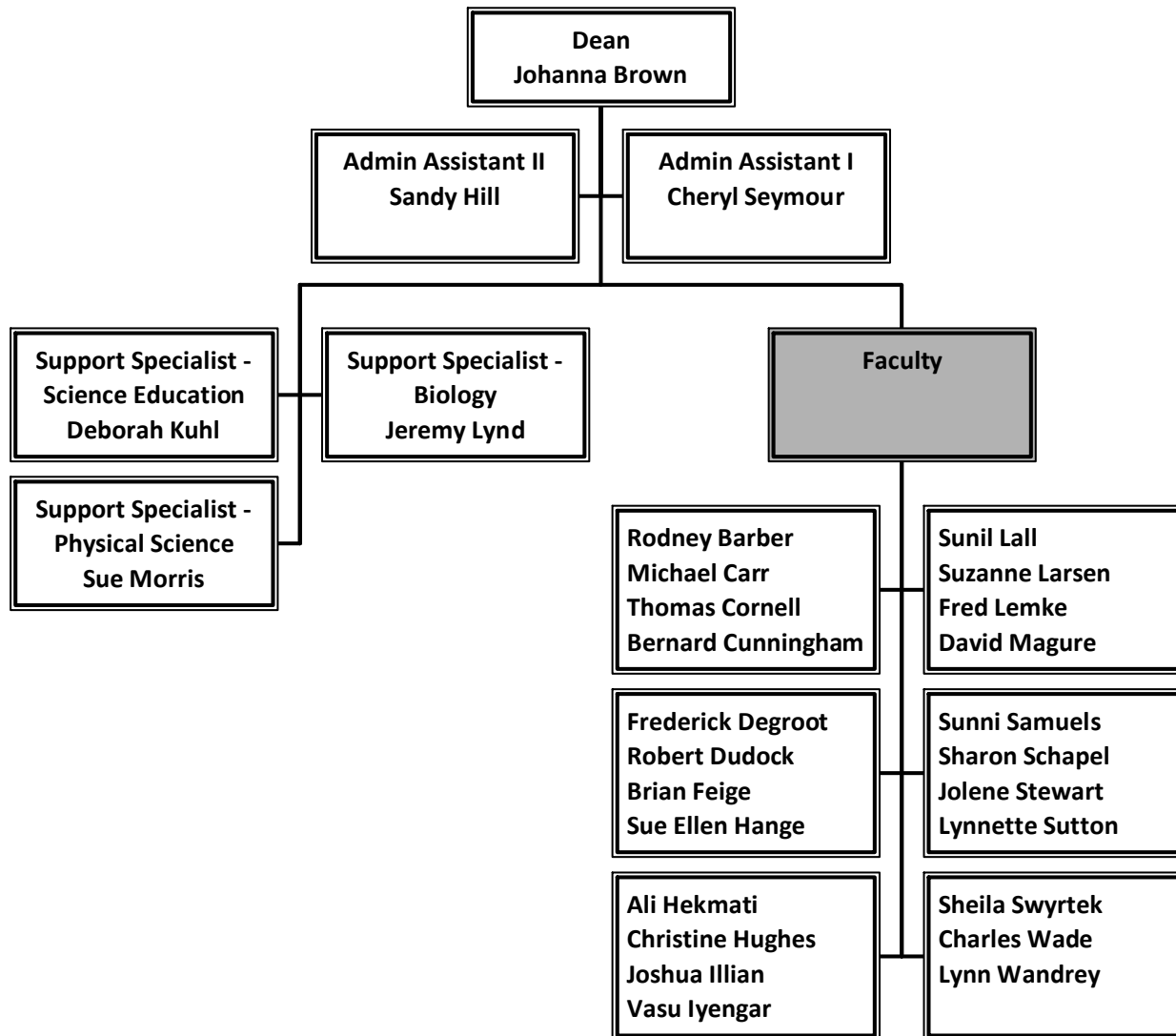
Registrar & Registration

December 31, 2011



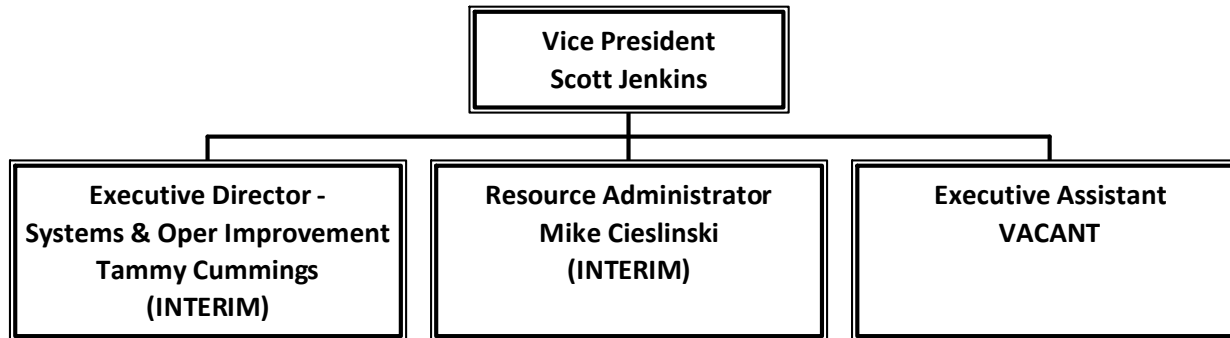
Science & Math

December 31, 2011



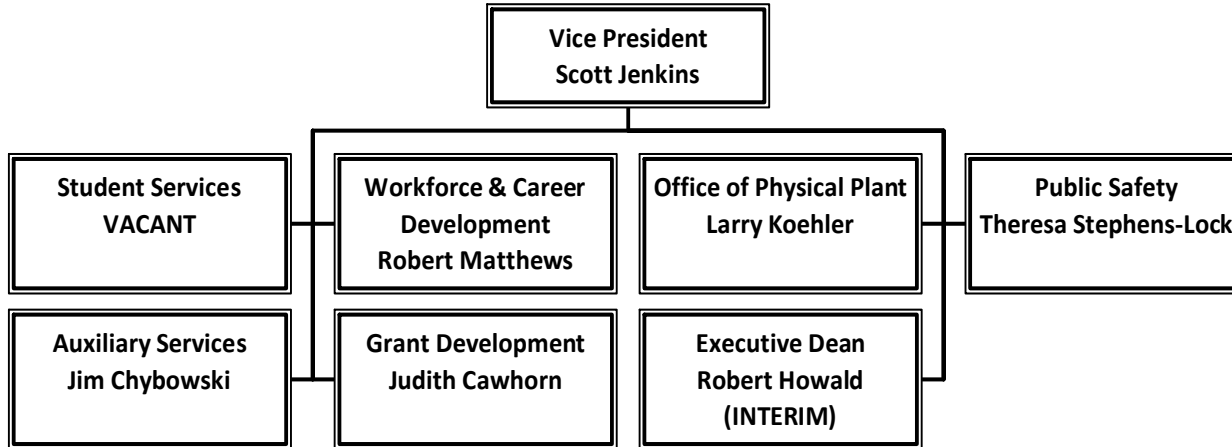
Student & Administrative Services (Office of the Vice President)

December 31, 2011



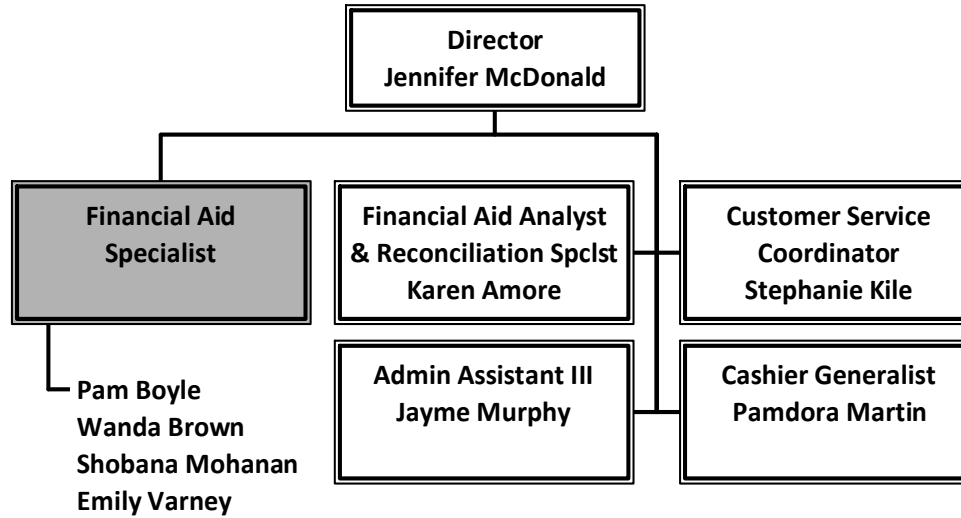
Student & Administrative Services (Overview)

December 31, 2011



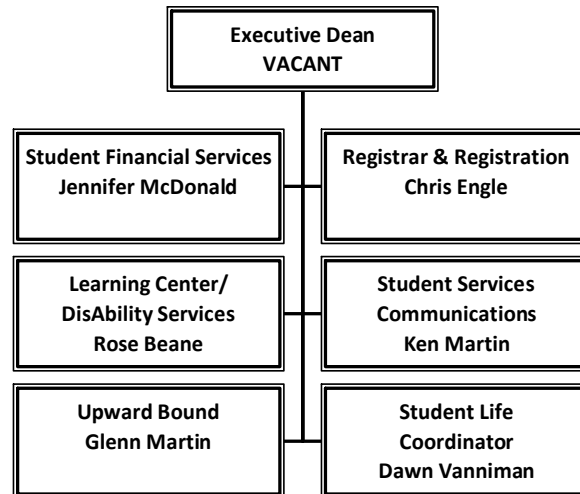
Student Financial Services

December 31, 2011



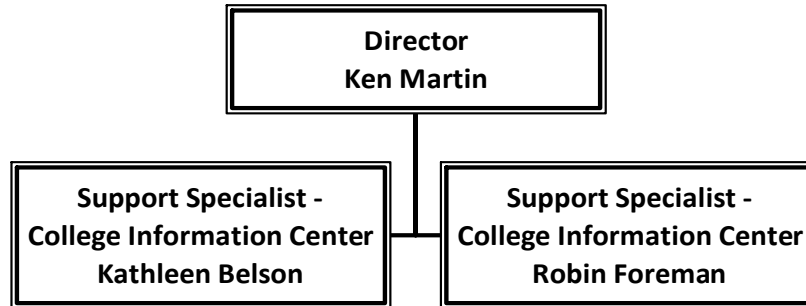
Student Services

December 31, 2011



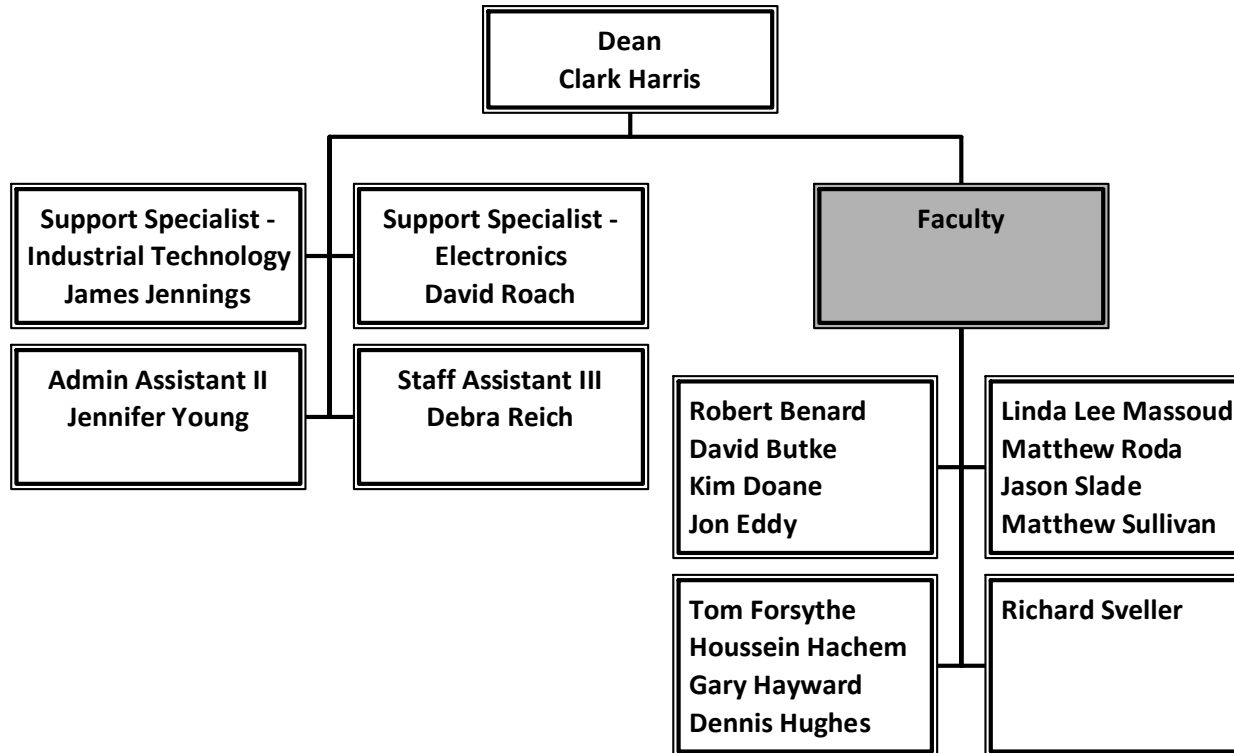
Student Services Communications

December 31, 2011



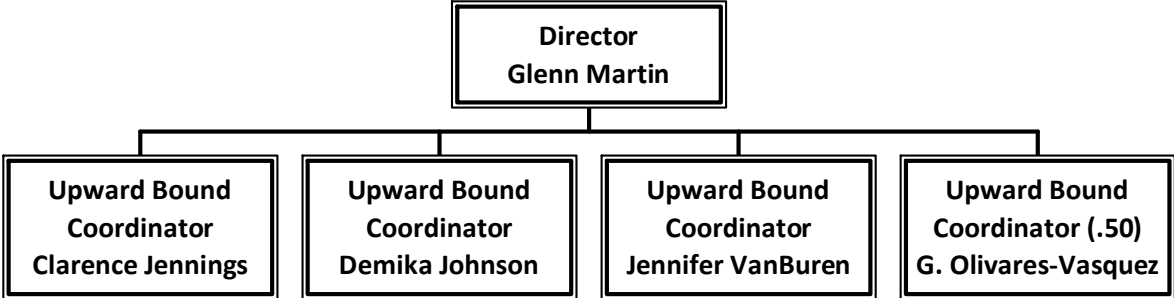
Technology

December 31, 2011



Upward Bound Programs

December 31, 2011



* Supplemental TAP

Workforce & Career Development

December 31, 2011

